

Soultronics

From the album 'Live at The Cirkus, Stockholm'

by D'Angelo (2001)

Bass part by
Pino Palladino

Transcribed by
Vassilis Lazouras

$\text{♩} = 105 \text{ bpm}$

Intro

4

The first measure of the bass line begins with a double bar line and a sharp sign. It contains a half note G2, followed by a quarter rest, a quarter note G2, a quarter note F2, a quarter note E2, and a quarter note D2.

4

The second measure contains a quarter note G2, a quarter note F2, a quarter note E2, a quarter note D2, a quarter note C2, a quarter note B1, a quarter note A1, and a quarter note G1.

6

The third measure contains a quarter note G2, a quarter note F2, a quarter note E2, a quarter note D2, a quarter note C2, a quarter note B1, a quarter note A1, and a quarter note G1.

8

The fourth measure contains a quarter note G2, a quarter note F2, a quarter note E2, a quarter note D2, a quarter note C2, a quarter note B1, a quarter note A1, and a quarter note G1.

10

The fifth measure contains a quarter note G2, a quarter note F2, a quarter note E2, a quarter note D2, a quarter note C2, a quarter note B1, a quarter note A1, and a quarter note G1.

12

The sixth measure contains a quarter note G2, a quarter note F2, a quarter note E2, a quarter note D2, a quarter note C2, a quarter note B1, a quarter note A1, and a quarter note G1.

14

The seventh measure contains a quarter note G2, a quarter note F2, a quarter note E2, a quarter note D2, a quarter note C2, a quarter note B1, a quarter note A1, and a quarter note G1.

16

The eighth measure contains a quarter note G2, a quarter note F2, a quarter note E2, a quarter note D2, a quarter note C2, a quarter note B1, a quarter note A1, and a quarter note G1.

18

The ninth measure contains a quarter note G2, a quarter note F2, a quarter note E2, a quarter note D2, a quarter note C2, a quarter note B1, a quarter note A1, and a quarter note G1.

20

The tenth measure contains a quarter note G2, a quarter note F2, a quarter note E2, a quarter note D2, a quarter note C2, a quarter note B1, a quarter note A1, and a quarter note G1.

22



24



26



28



30



32



34



37



39



41



43



45



47



49



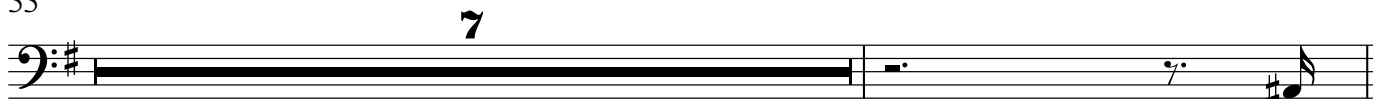
51



53



55



63



65



67



69



71



