

Walkabout

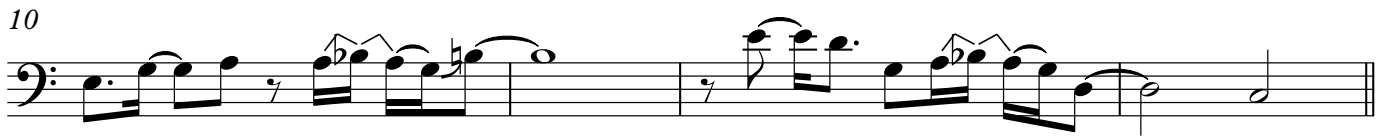
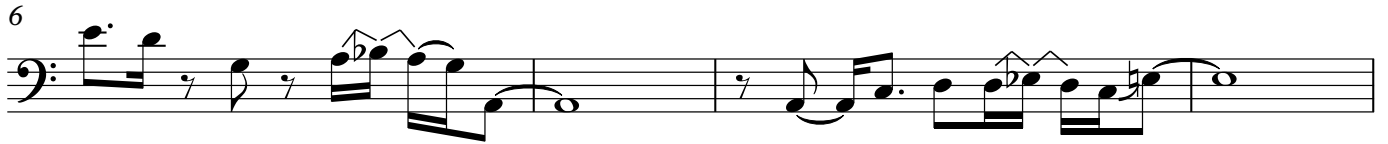
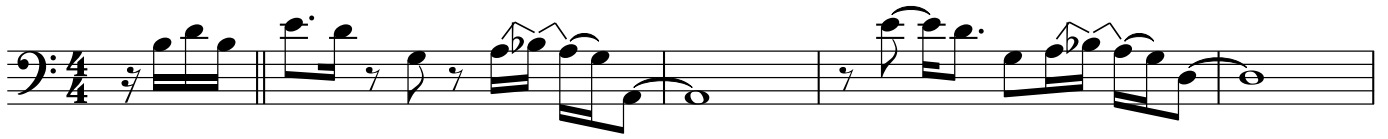
Bass part by
Flea

From the album 'One Hot Minute'
by the Red Hot Chili Peppers (1995)

Transcribed by
Vassilis Lazouras

♩ = 90 bpm

Intro



28



30 Chorus



34 Verse



36



38



40



42



44



46



48



50 Chorus



54 Verse

Musical staff for measure 54, featuring a bass clef and a key signature of one sharp (F#). The staff contains a sequence of notes and rests, including a dotted quarter note, an eighth note, and a quarter note, with various accidentals and slurs.

56

Musical staff for measure 56, continuing the sequence from the previous measure with similar rhythmic and melodic patterns.

58

Musical staff for measure 58, showing further development of the musical theme.

60

Musical staff for measure 60, concluding the verse section with a double bar line and a key signature change to three sharps (F#, C#, G#).

62 Bridge

x3

Musical staff for measure 62, marking the beginning of the bridge section. It features a key signature of three sharps and a repeat sign at the end.

64 Guitar Solo

Musical staff for measure 64, indicating the start of a guitar solo section with a key signature of one sharp.

66

Musical staff for measure 66, continuing the guitar solo.

68

Musical staff for measure 68, showing more complex rhythmic patterns in the guitar solo.

70

Musical staff for measure 70, concluding the guitar solo with a double bar line and a key signature change to three sharps.

72 Verse



74



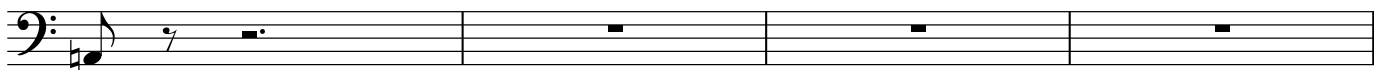
76



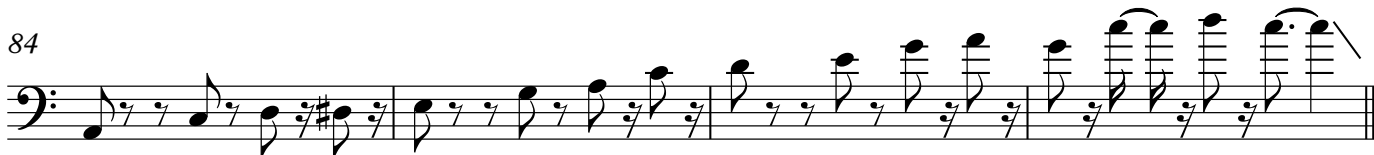
78



80 Breakdown



84



88 Intrumental

x4



92



96

gliss.



99

gliss.

